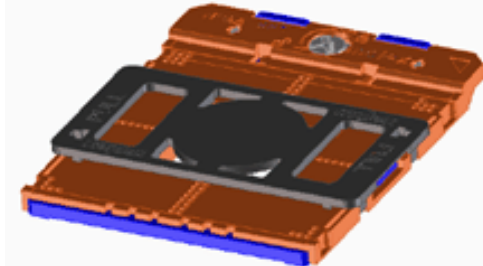


PLEASE CHECK WWW.MOLEX.COM FOR LATEST PART INFORMATION

**Part Number:** 0479890332  
**Status:** Active  
**Description:** 1.00mm (.039") by 1.00mm (.039") Pitch rPGA 988B Notebook PC CPU Socket,with Pick-and-Place Cover, Hard Tray Packaging, 988 Circuits, Lead-free



Series

image - Reference only

**Documents:**  
[Drawing \(PDF\)](#) [RoHS Certificate of Compliance \(PDF\)](#)  
[Product Specification PS-47989-001 \(PDF\)](#)

General	
Product Family	Processor Sockets
Series	47989
Comments	Pick-and-Place Cap
Component Type	Socket
Product Name	rPGA988B, rPGA989
Physical	
Circuits (Loaded)	988
Color - Resin	Black, Natural
Durability (mating cycles max)	30
Material - Metal	Copper Alloy
Material - Plating Mating	Gold
Material - Plating Termination	Copper, Silver, Tin
Material - Resin	High Temperature Thermoplastic
Packaging Type	Tray
Pitch - Mating Interface (in)	0.039 In
Pitch - Mating Interface (mm)	1.00 mm
Plating min: Mating (µin)	15
Plating min: Mating (µm)	0.38
Temperature Range - Operating	-20°C to +90°C
Termination Interface: Style	Solder or Weld

Electrical	
Current - Maximum per Contact	.5A
Voltage - Maximum	5V

Material Info

Reference - Drawing Numbers	
Packaging Specification	PK-47989-002
Product Specification	PS-47989-001
Sales Drawing	SD-47989-001

Intel and Nehalem and relevant names are either trademarks or registered trademarks of Intel Corporation

**EU RoHS**  
**ELV and RoHS**  
**Compliant**  
**REACH SVHC**  
**Not Reviewed**  
**Halogen-Free**  
**Status**  
**Not Reviewed**

**China RoHS**



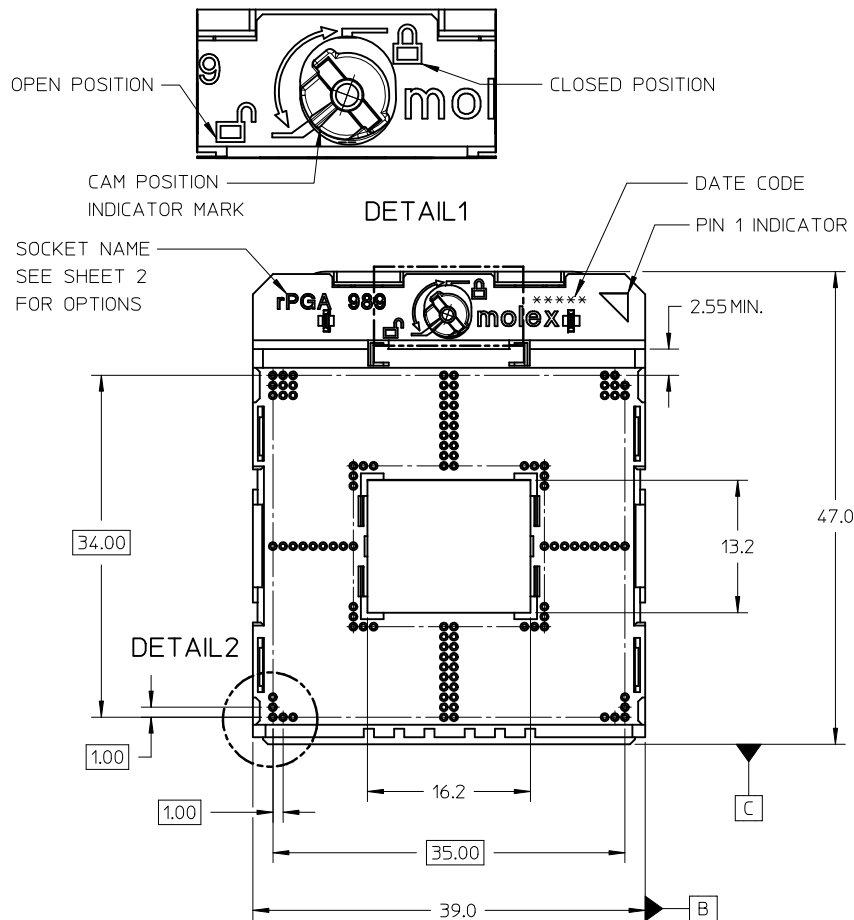
**Need more information on product environmental compliance?**  
Email [productcompliance@molex.com](mailto:productcompliance@molex.com)  
For a multiple part number RoHS Certificate of Compliance, [click here](#)  
Please visit the [Contact Us](#) section for any non-product compliance questions.

**Search Parts in this Series**  
47989Series

**Mates With**  
Intel\* Nehalem Processor

PLEASE CHECK WWW.MOLEX.COM FOR LATEST PART INFORMATION





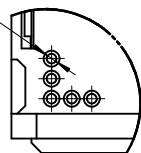
NOTES:

- 1) THIS SOCKET COMPLIES WITH ALL SPECIFICATIONS AND PERFORMANCE REQUIREMENTS FOR INTEL rPGA98X SERIES CPU PROCESSORS.
- 2) SOCKET SHOWN IN OPEN POSITION.
- 3) SEE SHEET 2 FOR DETAILS PERTAINING TO KEYING, MATERIAL AND PACKAGING OPTIONS.
- 4) THIS PRODUCT SERIES COMPLIANT TO RoHS DIRECTIVE 2002/95/EC AND ELV DIRECTIVE 2000/53/EC.

0.49 REF. (989X)

0.41 A B C

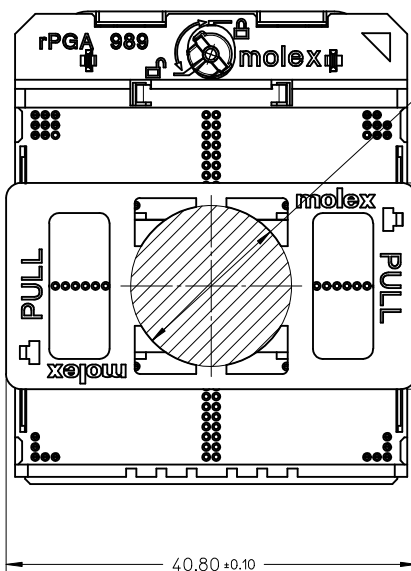
0.25 A



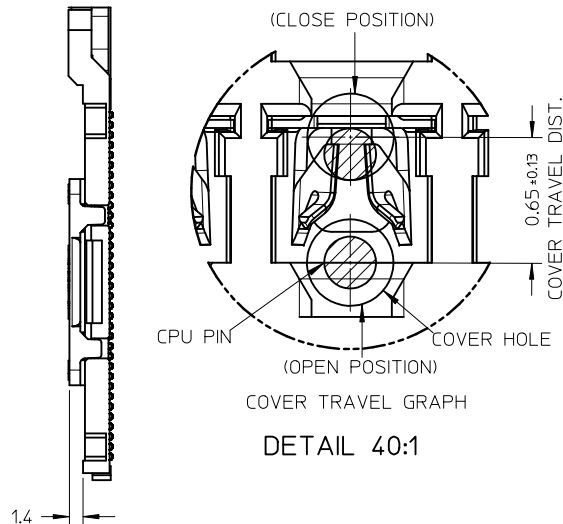
DETAIL2

ENTER DESCRIPTION EC NO: SH2010-0084 DRWN: ZHANG11 CHKD: APPR: WFDENG	DESCRIPTION	QUALITY SYMBOLS <div><div><div><div></div></div></div><div><div><div></div></div></div><div><div><div></div></div></div></div> <div><div><div></div></div></div> <div><div><div></div></div></div> <div><div><div></div></div></div> <div><div><div></div></div></div>	GENERAL TOLERANCES (UNLESS SPECIFIED)		DIMENSION STYLE MM ONLY		SCALE 2:1	DESIGN UNITS METRIC	THIRD ANGLE PROJECTION			
					DRAWN BY DATE		TITLE RPGA989 SOCKET ASSEMBLY					
					QWFANG 2008/04/25							
					CHECKED BY DATE							
					JKACHLIC 2008/05/29		MOLEX INCORPORATED					
					APPROVED BY DATE							
					CL IANG 2008/05/29							
					ANGULAR ± 2 °		MATERIAL NO.		DOCUMENT NO.		SHEET NO.	
					DRAFT WHERE APPLICABLE MUST REMAIN WITHIN DIMENSIONS		SEE TABLE		SD-47989-001		1 OF 3	
							SIZE A3		THIS DRAWING CONTAINS INFORMATION THAT IS PROPRIETARY TO MOLEX INCORPORATED AND SHOULD NOT BE USED WITHOUT WRITTEN PERMISSION			





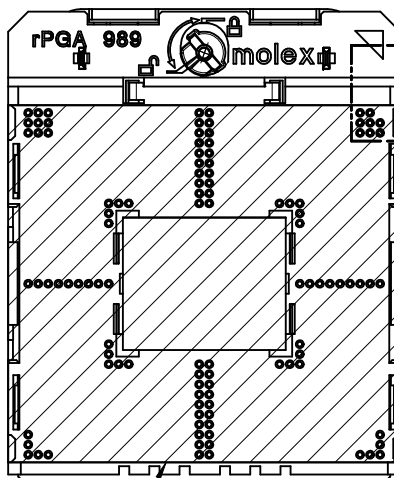
20.5



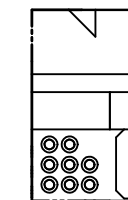
DETAIL 40:1

4) PACKAGING SPECIFICATION: PK-47989-001 (TAPE & REEL)  
PK-47989-002 (HARD TRAY)

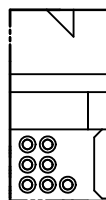
MYLAR PICK &amp; PLACE OPTION



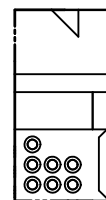
MYLAR -



1PGA989  
47989-01\*\*



PGA988A  
47989-02\*\*



PGA988B  
47989-03\*\*

PART NUMBER	PICK UP TYPE		PACKAGE TYPE	
	MYLAR	CAP	T&R	HARD TRAY
47989-0112	◆			◆
47989-0122	◆		◆	
47989-0132		◆		◆
47989-0142		◆	◆	
47989-0212	◆			◆
47989-0222	◆		◆	
47989-0232		◆		◆
47989-0242		◆	◆	
47989-0312	◆			◆
47989-0322	◆		◆	
47989-0332		◆		◆
47989-0342		◆	◆	

<div>ENTER DESCRIPTION</div> <div>EC NO: SH2010-0084</div> <div>DRAWN: ZHANG11</div> <div>CHKD:</div> <div>APPR: WFDENG</div> <div>2009/09/25</div> <div>2009/09/25</div> <div>2009/10/12</div>	<div>DESCRIPTION</div> <div>QUALITY SYMBOLS</div> <div><div><div><div>▽</div><div>A</div><div>=</div><div>0</div></div></div><div><div><div>▽</div><div>E</div><div>=</div><div>0</div></div></div><div><div><div>▽</div><div>F</div><div>=</div><div>0</div></div></div></div>	GENERAL TOLERANCES (UNLESS SPECIFIED)			DIMENSION STYLE MM ONLY		SCALE 2:1	DESIGN UNITS METRIC	<div><div><div></div><div></div><div></div></div></div> THIRD ANGLE PROJECTION	
				mm	INCH	DRAWN BY DATE		TITLE RPGA989 SOCKET ASSEMBLY		
		4 PLACES	± ---	± ---	QWFANG2008/04/25					
		3 PLACES	± ---	± ---	CHECKED BY DATE		MOLEX MOLEX INCORPORATED			
		2 PLACES	± 0.10	± ---	JKACHLIC2008/05/29					
		1 PLACE	± 0.20	± ---	APPROVED BY DATE		DOCUMENT NO. SD-47989-001			
ANGULAR ± 2 °		CL IANG2008/05/29		SHEET NO. 2 OF 3						
DRAFT WHERE APPLICABLE MUST REMAIN WITHIN DIMENSIONS			MATERIAL NO. SEE TABLE							
<div>REV</div> <div>A</div>		THIS DRAWING CONTAINS INFORMATION THAT IS PROPRIETARY TO MOLEX INCORPORATED AND SHOULD NOT BE USED WITHOUT WRITTEN PERMISSION								



10 9 8 7 6 5 4 3 2 1

F

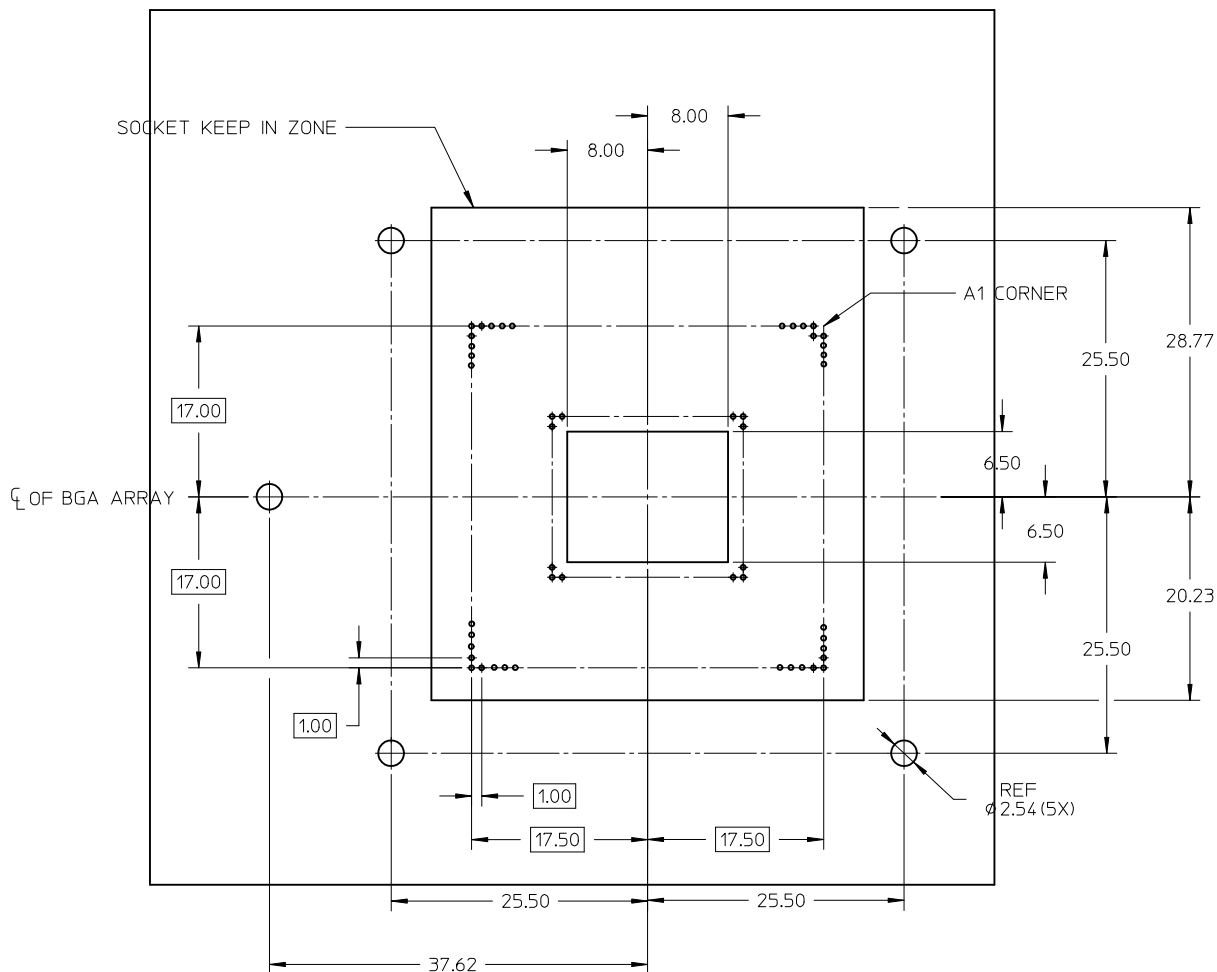
E

D

C

B

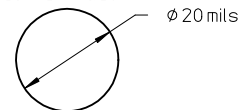
A



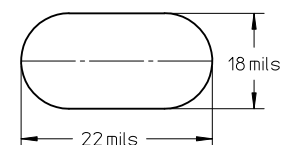
### NOTES:

shape pada of PCB are recommended

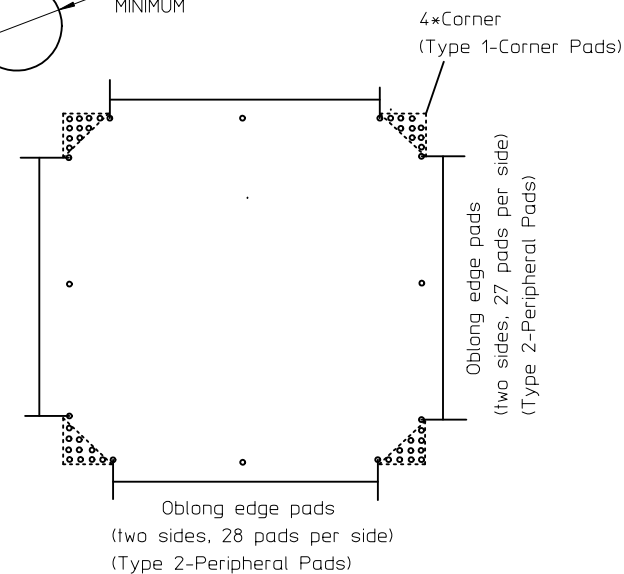
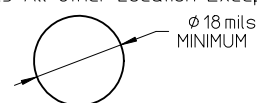
TYPE1-Corner Pads



TYPE2-Peripheral Pads (Oblong-shape pada are recommended)



TYPE3-All Other Location Except for those of Type1 and Type2 Locations)



MOTHERBOARD KEEP IN ZONE (KIZ)

ENTER DESCRIPTION EC NO: SH2010-0084 DRWN: JZHANG11 CHKD: APPR: WFDENG	QUALITY SYMBOLS <div><div><div>▽<sub>A</sub>=0</div></div><div><div>▽<sub>C</sub>=0</div></div><div><div>▽<sub>P</sub>=0</div></div></div>	DESCRIPTION	GENERAL TOLERANCES (UNLESS SPECIFIED)			DIMENSION STYLE MM ONLY		SCALE 2:1	DESIGN UNITS METRIC	<div><div></div><div></div></div> THIRD ANGLE PROJECTION	TITLE RPGA989 SOCKET ASSEMBLY
				mm	INCH	DRAWN BY QWFANG	DATE 2008/04/25				
			4 PLACES	± ---	± ---	CHECKED BY JKACHLIC	DATE 2008/05/29				
			3 PLACES	± ---	± ---	APPROVED BY CL IANG	DATE 2008/05/29				
			2 PLACES	± 0.10	± ---						
A	REV		1 PLACE	± 0.20	± ---			molex MOLEX INCORPORATED			
			ANGULAR ± 2 °			MATERIAL NO.		DOCUMENT NO.		SHEET NO.	
			DRAFT WHERE APPLICABLE MUST REMAIN WITHIN DIMENSIONS			SEE TABLE		SD-47989-001		3 OF 3	
SIZE A3 THIS DRAWING CONTAINS INFORMATION THAT IS PROPRIETARY TO MOLEX INCORPORATED AND SHOULD NOT BE USED WITHOUT WRITTEN PERMISSION											

9 8 7 6 5 4 3 2 1